

Alaska Department of Fish and Game

Habitat Section
Southeast Region



113-59-10040-2416 Tributary 2

ADDITION

Water body name:

Survey date: 8/7/2023

Quad: Sitka C-4

Species & Lifestage:

Upper Reach Latitude: 57.527421 **Longitude:** -135.058360

Survey crew: DK, FC, NJ, CD

Lower Reach Latitude: 57.526688 **Longitude:** -135.057690

Findings: We surveyed this uncataloged stream using a backpack electrofisher and baited minnow traps and GPS and captured juvenile coho salmon, cutthroat trout, and Dolly Varden. The channel forks at waypoint 514 and continues north to a 4 ft corrugated steel pipe at waypoint 479. Upstream of the pipe, the channel continues to narrow with low water flow and sections that go subsurface (Table 1; Figures 1–4). The juvenile coho salmon were caught in separate traps at the same waypoint so photos were taken separately.

Recommendations: Add this uncataloged stream to the anadromous waters catalog for rearing coho salmon up to waypoint 479 (Figure 5).

Nomination: Pending

Table 1.—113-59-10040-2416 tributary 2 survey data.

Waypoint	Latitude	Longitude	Notes	Stream Width ft	Stream Substrate	Habitat Features	Gradient %	Sample Effort	Sample Results
479	57.527422	-135.058371	CSP 4ft, filled with cobble. Low flow passing very little water. About 25% filled with substrate. Log grade control structures downstream.	6-8	Cobble Large Gravel		2-4	MT	2 CO 2 DV 1 CT
503	57.527492	-135.058562	15 ft subsurface section about 30 ft above culvert, water low above.	2-4	Fine Organic		1-2	EF	
504	57.527554	-135.058907	Channel dries out and begins to narrow up.	2-4	Fine Organic			EF	No Fish
507	57.528024	-135.059626	Upstream channel steepens to ~5%, low water with few pools.	2-4	Fine Organic		2-4	EF	No Fish
513	57.527177	-135.057759	Channel fans out prior to flowing into main.	12-15	Fine Organic		1-2	Not Fished	
514	57.526685	-135.057701	Confluence with anadromous tributary.						



Figure 1. Juvenile coho salmon caught at waypoint 479.



Figure 2. Culvert inlet at waypoint 479.



Figure 3. Stream channel at waypoint 479.



Figure 4. Stream channel at waypoint 507.

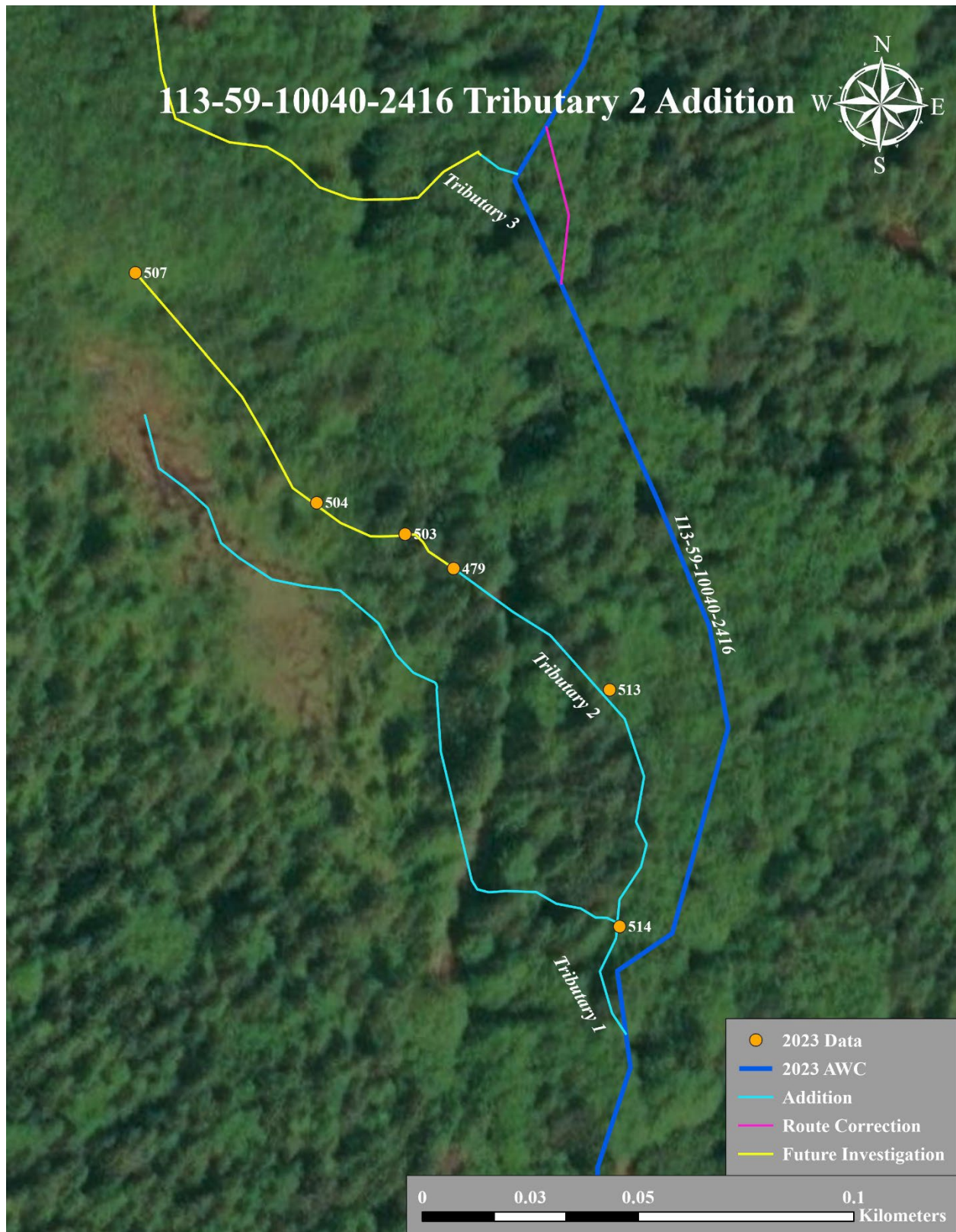


Figure 5. 113-59-10040-2416 tributary 2 addition map.